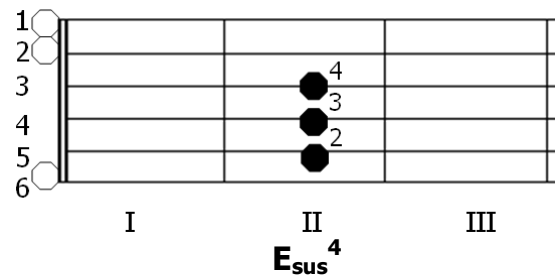
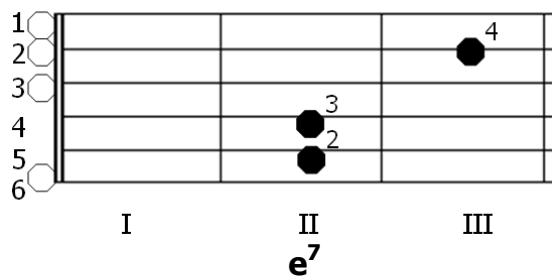
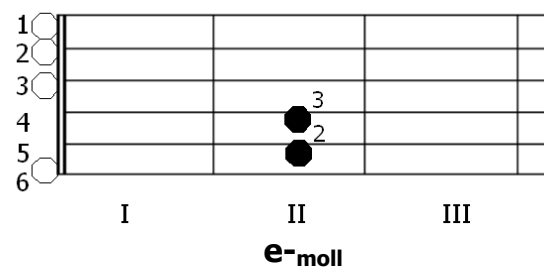
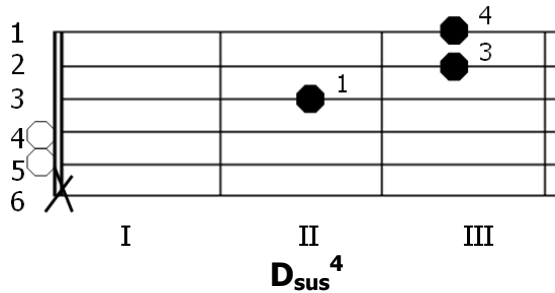
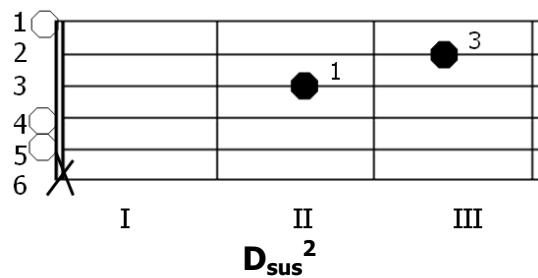
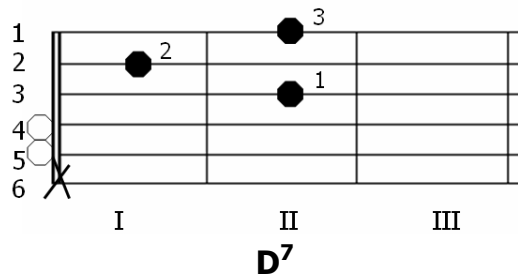
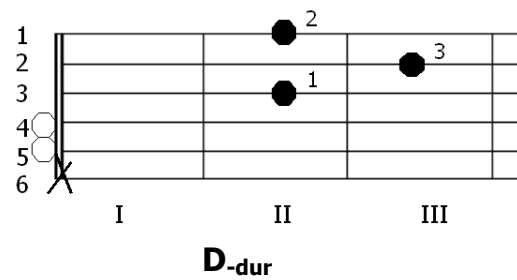
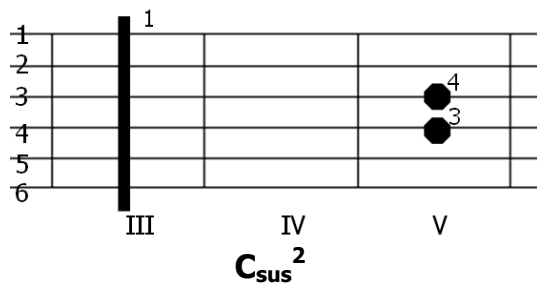
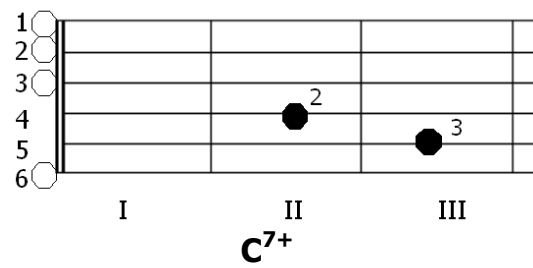
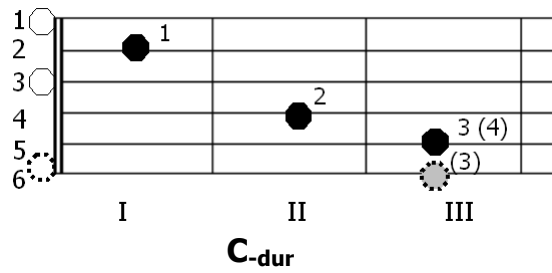


Diagramy akordów do moich wersji „Tornero”

I



The image displays six guitar chord diagrams for G major and its variations, arranged in three rows and two columns. Each diagram shows a six-string guitar fretboard with strings numbered 1 to 6 from top to bottom. Fingerings are indicated by solid black dots with numbers 1-4, and muted strings are shown as dashed circles.

- G-dur:** Diagram 1 (top left). Fret I: strings 2, 3, 4, 5 are muted (dashed circles). Fret II: string 1 (finger 1). Fret III: strings 1 (finger 4), 2 (finger 2), 3 (finger 3).
- G⁷⁺:** Diagram 2 (top right). Fret I: strings 2, 3, 4, 5 are muted. Fret II: string 1 (finger 1), string 2 (finger 2). Fret III: string 3 (finger 3).
- G⁶:** Diagram 3 (middle left). Fret I: strings 2, 3, 4, 5 are muted. Fret II: string 2 (finger 2). Fret III: string 3 (finger 3).
- G_{sus}²:** Diagram 4 (middle right). Fret I: strings 2, 3, 4, 5 are muted. Fret II: string 3 (finger 1). Fret III: strings 1 (finger 4), 2 (finger 3), 3 (finger 2).
- G_{sus}⁴:** Diagram 5 (bottom left). Fret III: string 1 (finger 1). Fret IV: strings 2, 3, 4, 5 are muted. Fret V: strings 1 (finger 4), 2 (finger 3), 3 (finger 2).